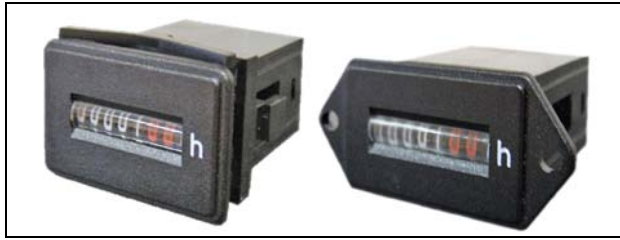


HK-30 DC Series



FEATURES:

- Low Cost
- DC or **NEW Multifunction 12-240V AC/DC** Input Voltage
- CE mark, UL recognized (DC only) & RoHS
- Rugged Design
- Long Life
- Non-reset

DESCRIPTION:

Hour meters are designed for the determination and monitoring of operating time, warranty period and maintenance intervals on electrically driven machines and devices. Typical applications are in mechanical processing and woodworking, in the textile and paper industry, on central heating boilers, electrical furnaces, power drives and rectifiers, etc. The HK-30's small size makes it ideal when space is limited. When connected in parallel to a control circuit the hour meter will only work during the operation of a machine or device.

SPECIFICATIONS:

Supply voltage: 6-12V, 12-36V, 36-80V or 110V (± 10%)
NEW 12-240V (12-240 AC/DC)

Mounting: R panel fork clamp, S panel screws D DIN rail

Connection: S flat pins 6.3x0.8 mm with screw terminal, P flat pins 6.3x 0.8 mm or screw terminals (mounting D Only)

Protection class: IP 40 and IP 20 (mounting D) front; IP 00 – connection. Optional IP 67 front

Power consumption: DC 9mA, AC/DC 10mA

Operating temp. range: -10°C to +55°C DC, -10°C to +70°C AC/DC

Reading: 1/10 hour (6 min.)

Counting range: 999,999.9 hours

Dimensions: mm, 1 mm = .03937"

Number of digits: 6 integers, 1 decimal

Digit height: 4 mm

Digit color: - integers: white - decimals: red

Housing color: black

Approval: UL recognized (DC only), CE mark & RoHS

Ordering Information:

- HK3012-36VDCRS P40
- HK3012-36VDCDIP20
- HK3012-240VRSIP40
- HK3012-240VSSIP40

Other models available upon request

MODEL	HK30	12-36VDC	S	S	IP40
CODE	1	2	3	4	5

CODE

1. Series: HK30
2. Voltage: 6 - 12, **12-36**, 36 - 80 or 110VDC
NEW 12-240V (12-240 AC/DC)
3. Mounting: R,S or D
4. Connection: S, P (Blank if Mounting D)
5. Protection: **IP40** front, IP 20 (mounting D), optional IP67 front (transparent housing)

